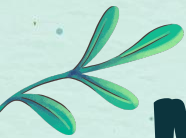




Hydronium

Soft & Wet



Members

01

6310545299

Thanatibordee
Sihaboonthong

02

6310546376

Noppharut
Kongsakdinasarn

03

6310546392

Bhokin
Watanapitak



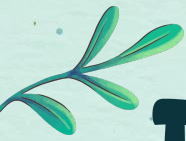


Table of contents



01

Introduction

02

Setup

03

Data Integration

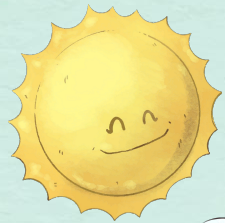
04

**Data
Visualization**

05

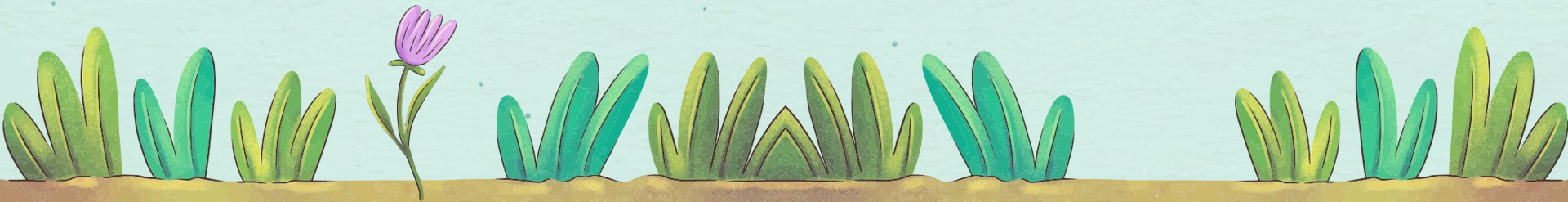
Demonstration





01 Introduction

Soft & Wet



Motivation & Inspiration

In everyday life, we have encountered so many plants and trees but can't tell what its name is that makes so hard to guess how the behavior of that plant or tree could be, although plants play a very important role in our lives. They make up a large part of our diet, as well as being used to make medicines, soaps, furniture, textiles, tyres, and much more. Although we now live in a highly industrialised society, we have not lost this dependence on plants. We need to be aware of the part that plants play in our lives and we must ensure that we care for them to continue this long relationship. That are the reason why we do this project for tracking the plant's water consumption to study the behavior of the potted plants, and also for future improvements to become "SMART FARM" or Auto Irrigation



Elephant Ears



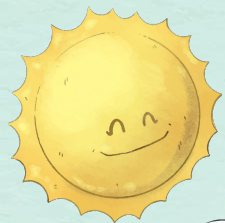
Pain Point & Obstacle



Most of the obstacle come from our Hardware device and outer Sensor, since it is an outer sensor, we have to study more about it for a while, and how to connect with kidbright board, how to get data out. For the sensor problems the output data have so many vary data that can't catch up or make a relation with them from our searching, we can conclude that it is missing resistor connection and the resistive principle can't take an accurate soil humidity

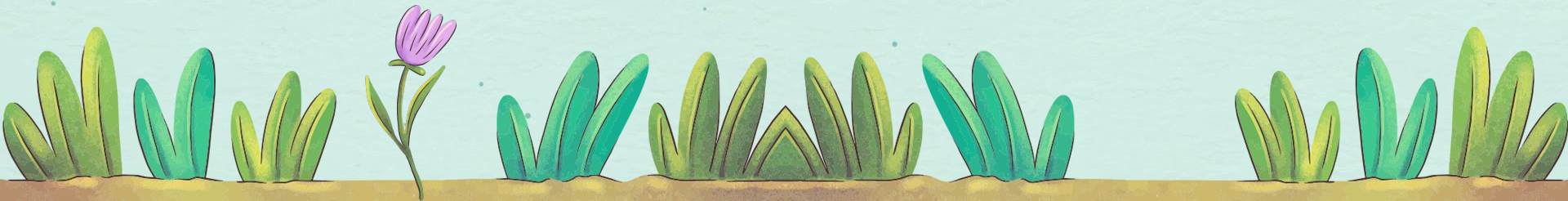
ts	value
2022-11-25 13:43:21	9.1
2022-11-25 13:45:22	67.5
2022-11-25 13:47:22	55.3
2022-11-25 13:49:22	9.5
2022-11-25 13:51:22	35.5
2022-11-25 13:53:22	94.5
2022-11-25 13:55:22	93.5
2022-11-25 13:57:22	31.7
2022-11-25 13:59:22	20.2
2022-11-25 14:01:22	100
2022-11-25 14:03:22	58.5
2022-11-25 14:05:23	12.7
2022-11-25 14:07:23	100
2022-11-25 14:09:23	68.5
2022-11-25 14:11:23	34
2022-11-25 14:13:23	100
2022-11-25 14:15:23	33.4
2022-11-25 14:17:23	68.4
2022-11-25 14:19:23	79.8
2022-11-25 14:21:23	8.1
2022-11-25 14:23:23	79.4
2022-11-25 14:25:24	19.2
2022-11-25 14:27:24	10.6
2022-11-25 14:29:24	99.6
2022-11-25 14:31:24	100

Ref: Sensor Error



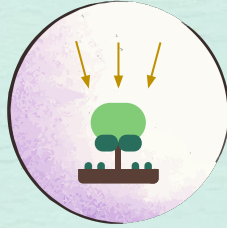
02 Setup

Soft & Wet



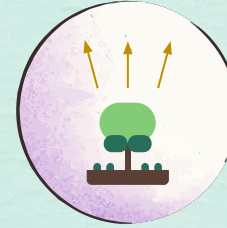


Data Source



Primary Data

Kidbright's Inner Sensor and Outer Sensor
For Inner Sensor, we collected **Light Intensity** and **Temperature**, For Outer Sensor, we collected **Humidity in the Soil**



Secondary Data

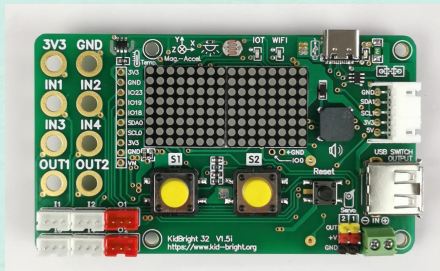
We use API Data extracted from 2 sources 1. CO2 Signal that will give us **Carbon Intensity** 2. TMD will give us **Rainfall in 3 hours**



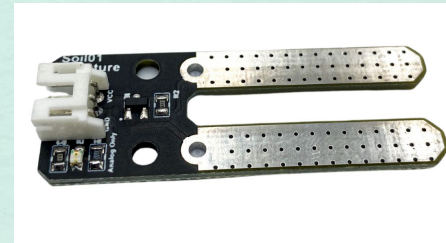
Hardware Components



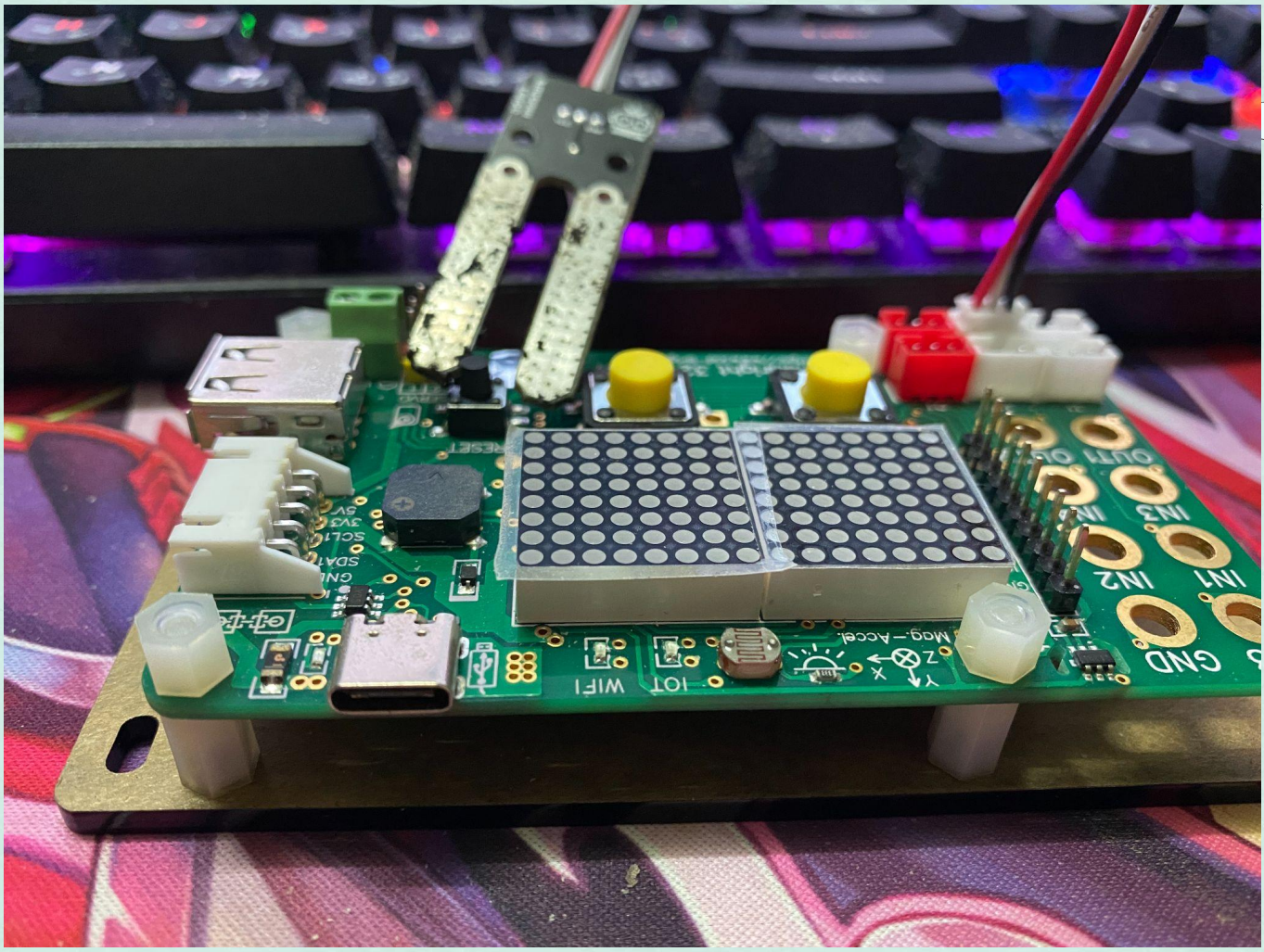
JST wire (3 pins)



Kidbright board



Humidity Sensor



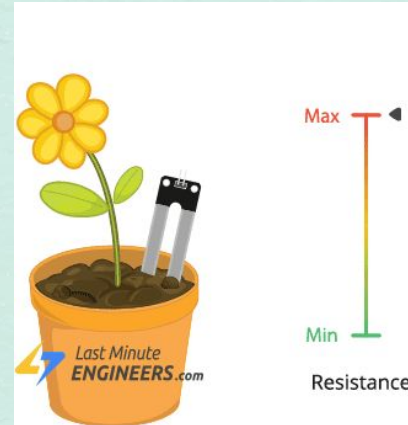
How does it work?

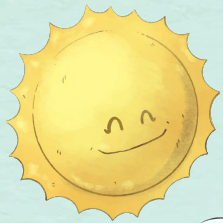
The fork-shaped probe with two exposed conductors acts as a variable resistor (similar to a potentiometer) whose resistance varies with the soil's moisture content. This resistance varies inversely with soil moisture:

- The **more water** in the soil, the better the conductivity and the **lower** the resistance.
- The **less water** in the soil, the lower the conductivity and thus the **higher** the resistance.

The sensor produces an output voltage which is available at an Analog Output pin, so we can convert ADC value to real value by Linear-Interpolation

Ref: [How Sensor Measure](#)

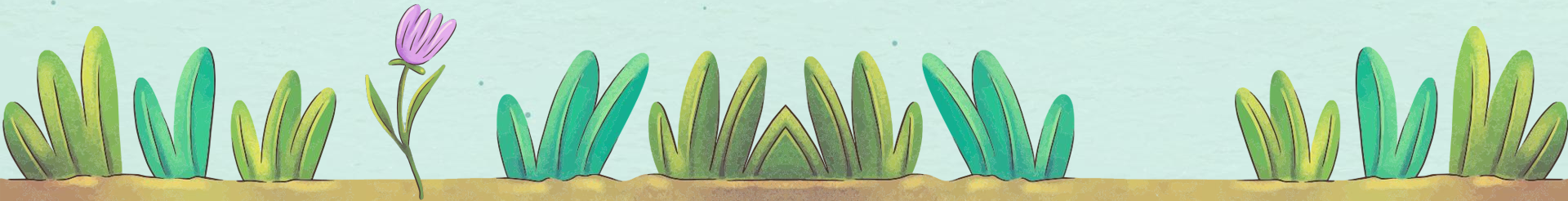




03

Data Integration

Soft & Wet



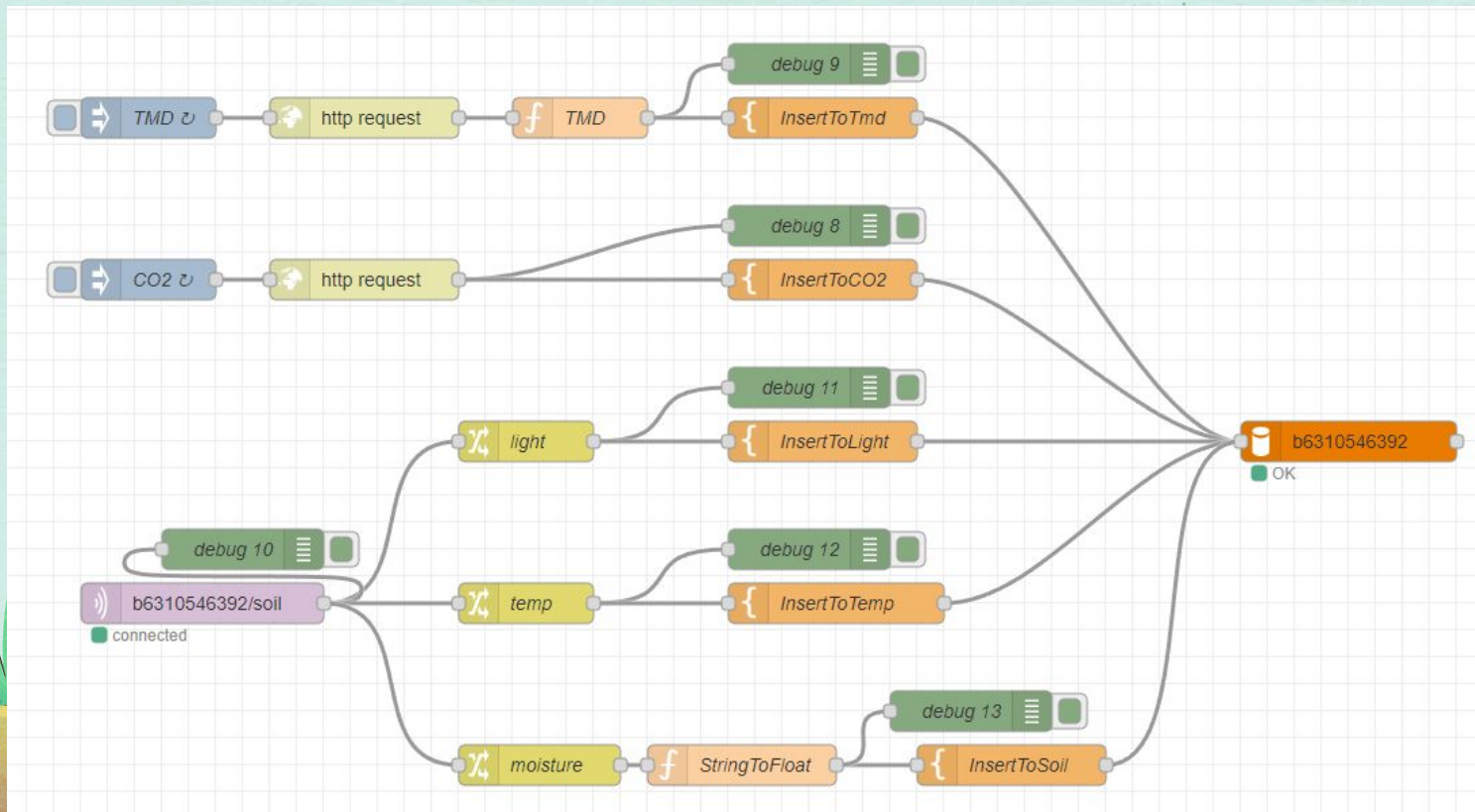
Data Integration

We separate each data into own table since we collect our data not exact the same time or same period, also API data that we extracted need to have lat and lon value for indicate where to get data from along with time-stamp that all table had.

Finally, we query all the data into one table by indicate the source and value into its every one hour



Node-Red



	#	Name	Type	Coll
<input type="checkbox"/>	1	ts	timestamp	
<input type="checkbox"/>	2	value	float	

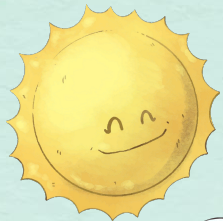
	#	Name	Type	Co
<input type="checkbox"/>	1	ts	timestamp	
<input type="checkbox"/>	2	lat	float	
<input type="checkbox"/>	3	lon	float	
<input type="checkbox"/>	4	carbonIntensity	float	

	#	Name	Type	Collation	At
<input type="checkbox"/>	1	ts	timestamp		
<input type="checkbox"/>	2	source	varchar(100)	utf8_general_ci	
<input type="checkbox"/>	3	value	int(11)		

```

INSERT INTO SoftWet_sensor (`ts`, `source`, `value`)
SELECT * FROM (
  (SELECT DATE_ADD(DATE(ts), INTERVAL floor(HOUR(ts)) HOUR) AS
    'date', 'co2signal' as source, AVG(carbonIntensity) as value
  FROM `SoftWet_co2`
  GROUP BY date, source)
  UNION
  (SELECT DATE_ADD(DATE(ts), INTERVAL floor(HOUR(ts)) HOUR) AS
    'date', 'kidbright' as source, AVG(value) as value
  FROM `SoftWet_light`
  GROUP BY date, source)
  UNION
  (SELECT DATE_ADD(DATE(ts), INTERVAL floor(HOUR(ts)) HOUR) AS
    'date', 'kidbright' as source, AVG(value) as value
  FROM `SoftWet_soil`
  GROUP BY date, source)
  UNION

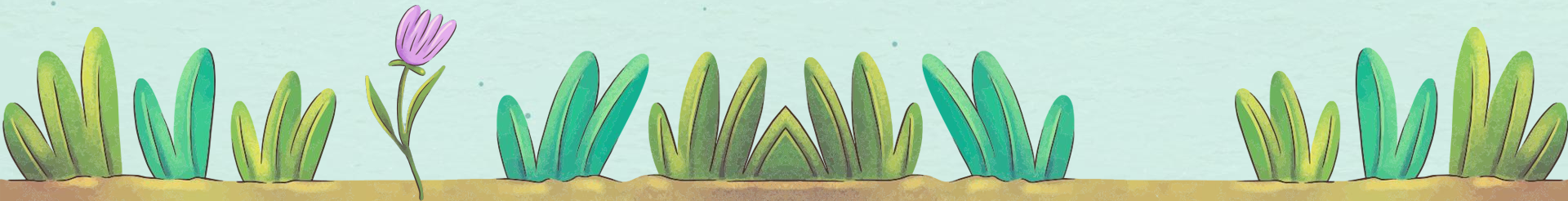
```



04

Data Visualization

Soft & Wet



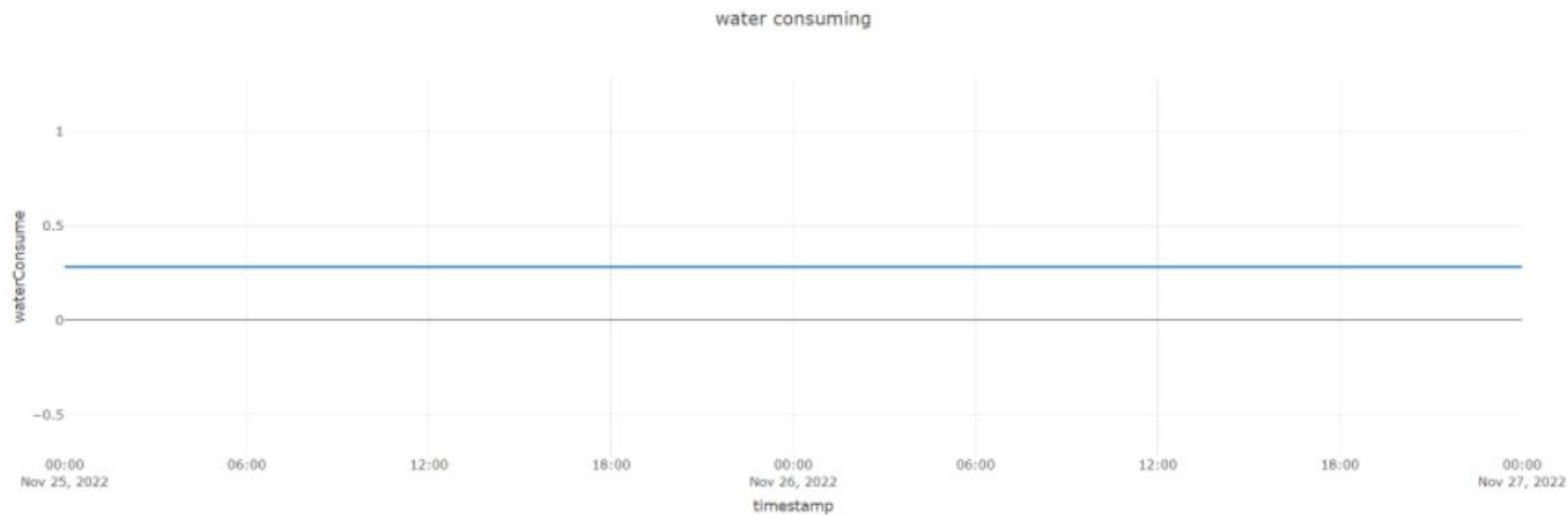


About The Project

The objective of the project is to track the plant's water consumption to study the behavior of the potted plants we want to monitor by plug the moisture sensor into the soil. We collect a status of rain, humidity in soil, light, CO2, so we can find the rate of water consumption of the rain and tell what time we should water the plants again.

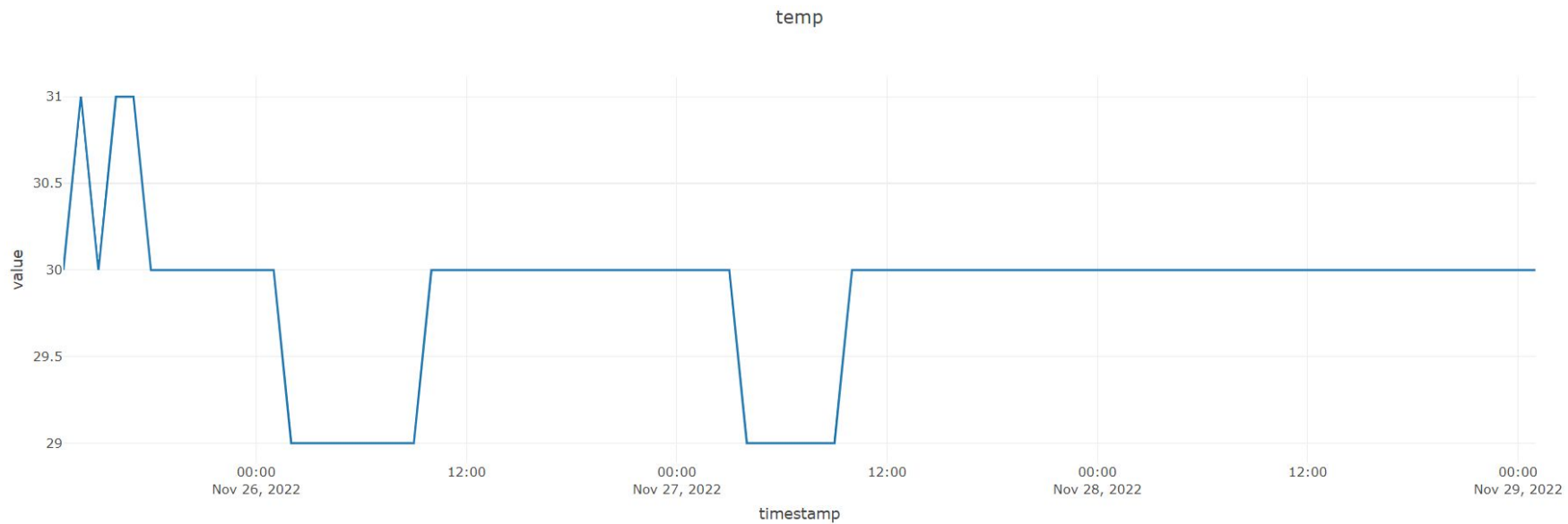
[Dashboard](#)[Sensors](#)

****Wait for fetch watering again endpoint****

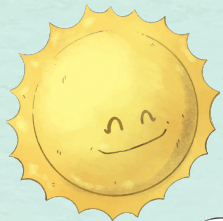


****Wait for endpoint watering again****

Group members:



light



05 Demonstration

Soft & Wet

