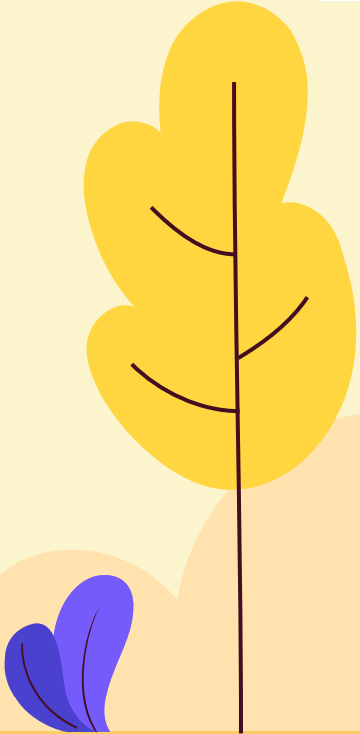




# WAT GUN MAI



01

OVERVIEW

02

DATA SOURCES

03

DATABASE

04

DATA VISUALIZATION

05

ARCHITECTURE

06

DATA SHARING API

TABLE OF CONTENTS





01

# OVERVIEW



## Wat Gun Mai Overview

Our application is about reviewing temples around you. And it come with these amazing features such as Searching for your temples and viewing its UV, temperatures, and reviews on that specifics temple.

**Why we choose** to do this project is because one of our friend who love to go to temples inspires us to record and give tourist a guide on which to go next.





02

# DATA SOURCES



## Google Place API

The Google Maps Platform is a set of APIs and SDKs that allows developers to embed Google Maps into mobile apps and web pages, or to retrieve data from Google Maps. There are several offerings.

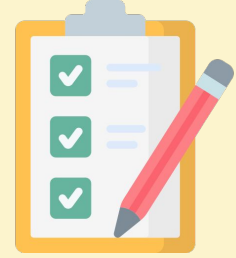




## OpenWeather API

OpenWeatherMap is an online service, owned by OpenWeather Ltd, that provides global weather data, including current weather data, forecasts, nowcasts and historical data, utilising meteorological broadcast services and raw data from airport weather stations, radar stations and other weather stations.





## Questionnaires

A set of printed or written questions with a choice of answers, devised for the purposes of a survey or statistical study.



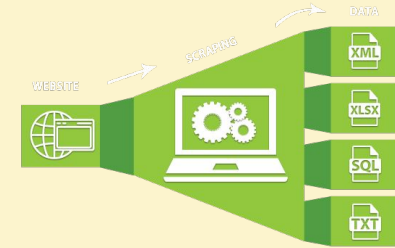




## OpenUV

Global Real-Time UV Index Forecast  
API for inspiring Devs, Innovators  
and Smart Home Enthusiasts you've  
been looking for.





## Web Scraper

Web scraping, web harvesting, or web data extraction is data scraping used for extracting data from websites. Web scraping software may access the World Wide Web directly using the Hypertext Transfer Protocol, or through a web browser.





03

**DATABASE**



# NoSQL: MongoDB



Temple

```
{
  name: String,
  description: String,
  address: String,
  lat: Number,
  long: Number,
  review: [review],
}
```

User

```
{
  name: String,
  email: String,
}
```

Review

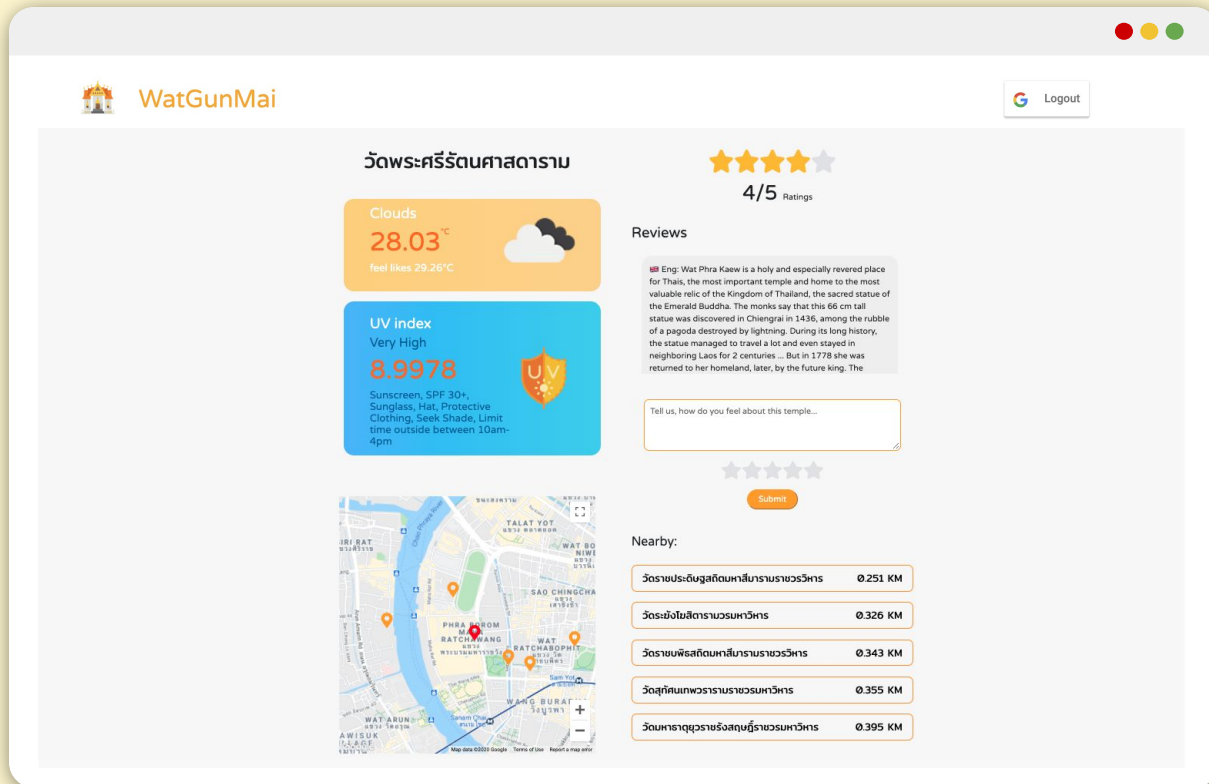
```
{
  userid: ObjectId,
  stars: Number,
  title: String,
  content: String,
  date: TimeStamp,
}
```



04

# DATA VISUALIZATION

# Website

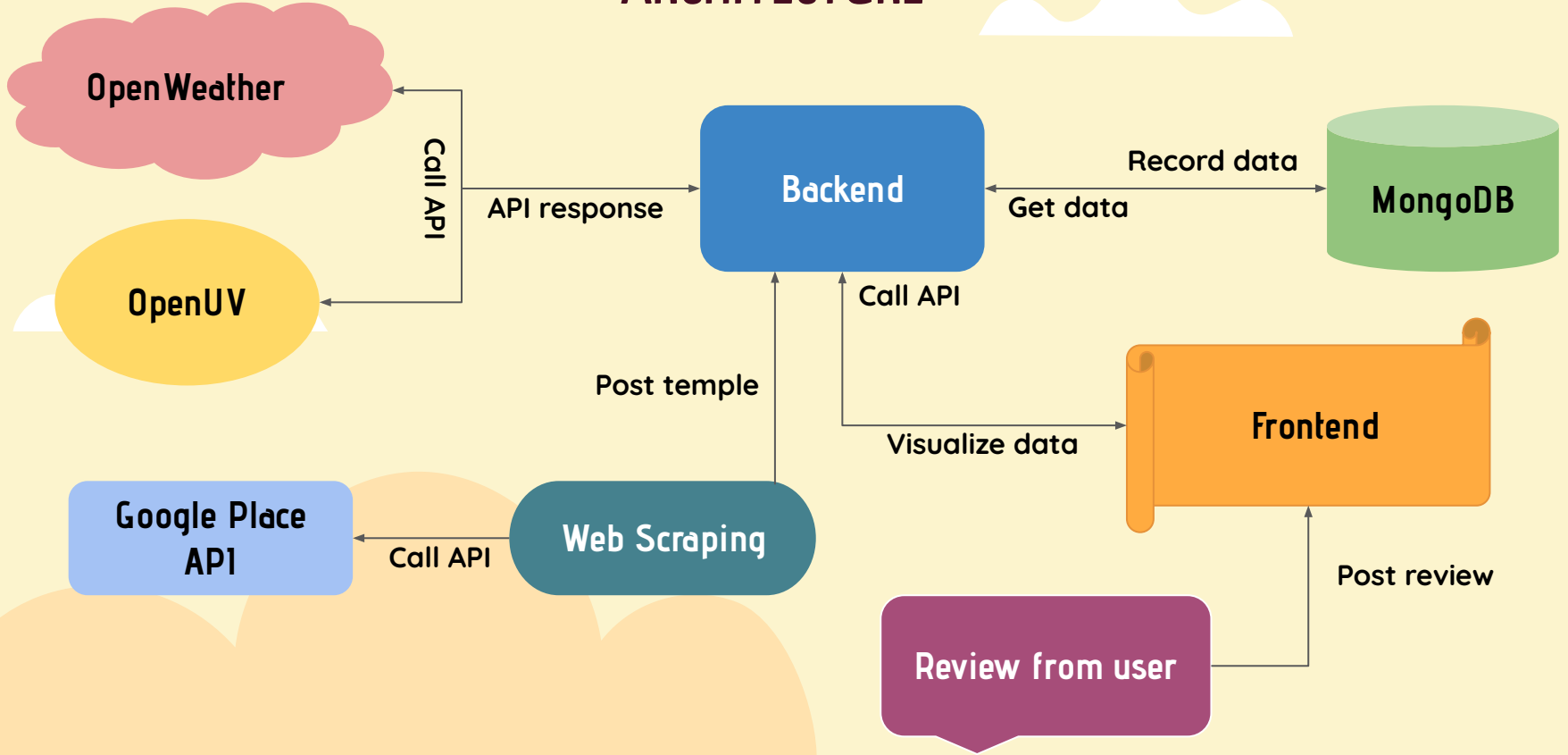




05

# ARCHITECTURE

# ARCHITECTURE








06

# Data sharing API

# Swagger



 **Swagger**  
version 3.0.0

## Wat Gun Mai CRUD 1.0.0

[ Base URL: localhost:5000/ ]

Wat Gun Mai Application API

MIT

Schemes

HTTP ▾

### Users

API for users in the system ▾

GET

/users

Get all users in system

POST

/users

Add user in system

GET

/users/{id}

Get user with given ID

DELETE

/users/{id}

Delete user by ID

### Temples

▾

GET

/temples

Get all temples in system

POST

/temples

Add temple in system

GET

/temples/{id}

get temple with given ID

PUT

/temples/{id}

Update temple with give ID

DELETE

/temples/{id}

Delete temple by ID

GET

/temples/{templateId}/templateInfo

Get all temples in system

GET

/temples/name/{templateName}

return list of temples that match given template name

### Reviews

▾

GET

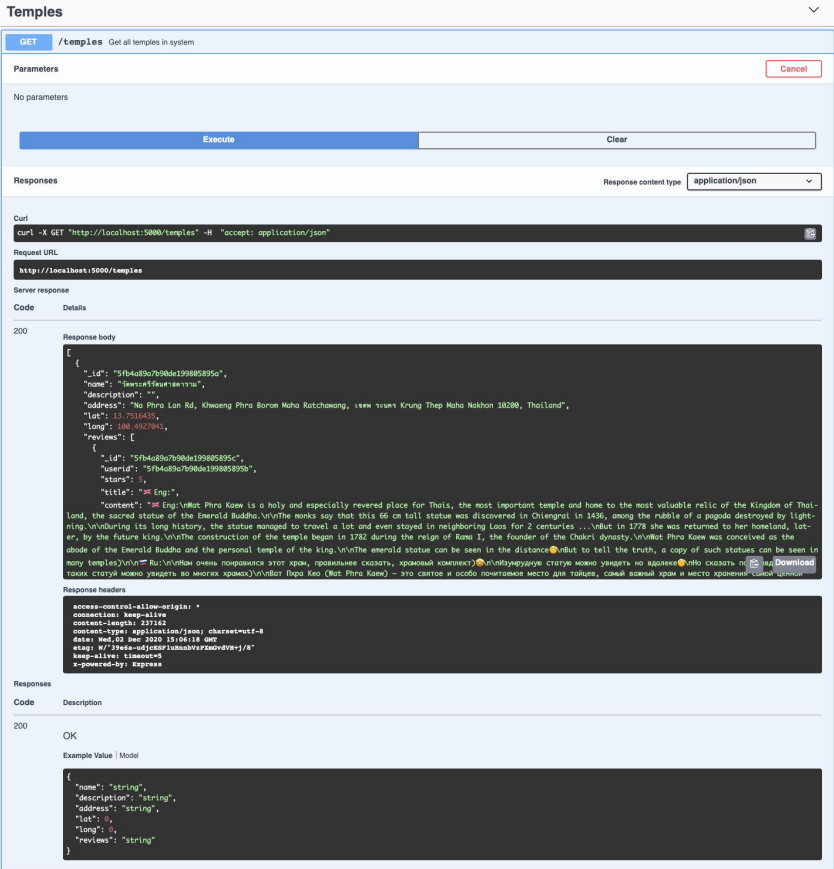
/reviews/{templateId}

Get review with given ID

POST

/reviews/{templateId}

Add review in system



[illegible]

# OUR TEAM

Chananchida  
Fuachai



Chananchida Fuachai  
6110545473

Sivanat  
Subpaisarn



Sivanat Subpaisarn  
6110545643

Sirikon  
Songsaengthong



Sirikon Songsaengthong  
6110545660

Phantakarn  
Kiatpaisarnsophon



Phantakarn Kiatpaisarnsophon  
6110545783